

CORE FACILITIES STAFF

www.igb.illinois.edu/corefacilities

Pictured from left to right:

Umnia Doha

Postdoctoral Research Associate
udoha2@illinois.edu
217.300.6173

Miranda O'Dell

Research Specialist/Lab Manager
modell@illinois.edu
217.300.6440

Austin Cyphersmith, PhD

Assistant Director of
Research Instrumentation
ajcypher@illinois.edu
217.244.9654

Hannah McClellan

Administrative Support
hlm@illinois.edu
217.300.8346

Kingsley Boateng, PhD

Assistant Director of
Bioscience Research and Microscopy
kboateng@illinois.edu
217.300.1642

Glenn Fried, PhD

Director of Core Facilities
gfried@illinois.edu
217.333.4328

Duncan Nall

Research Scientist
nall2@illinois.edu
217.244.8979

Reza Rajabi-Toustani

Postdoctoral Research Associate
rezar@illinois.edu
217.244.6356

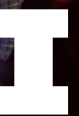
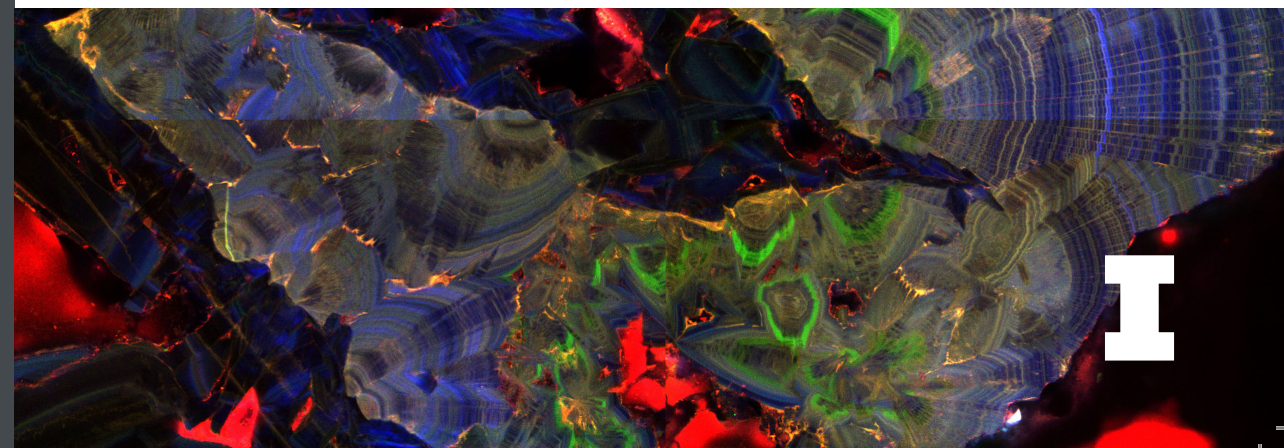
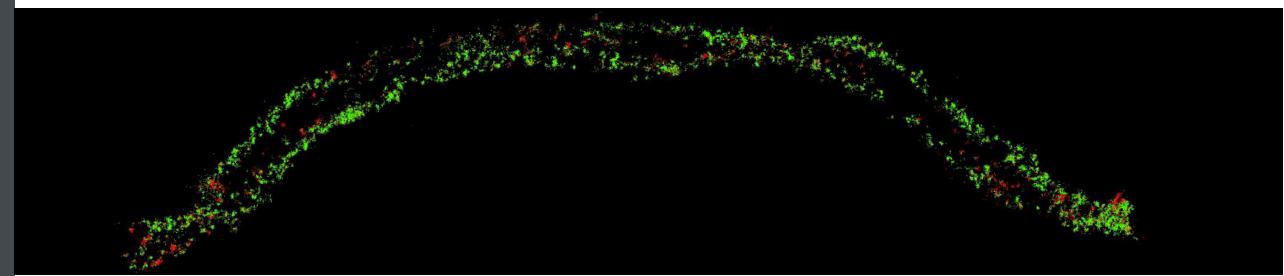
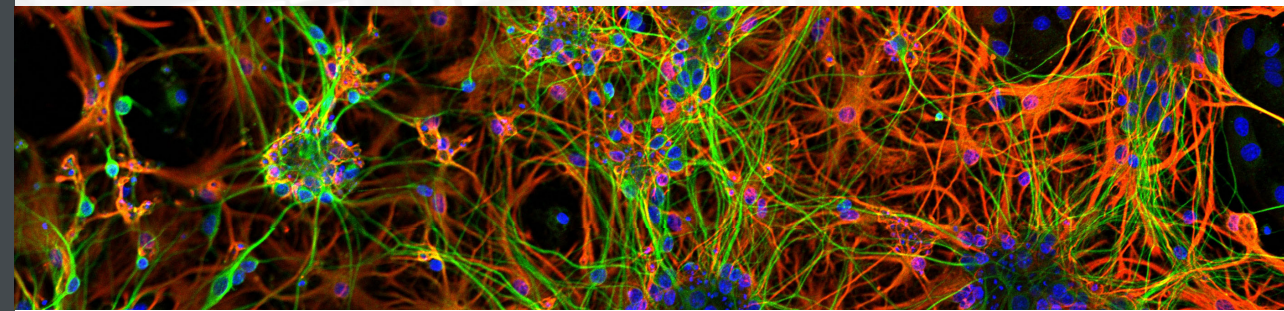
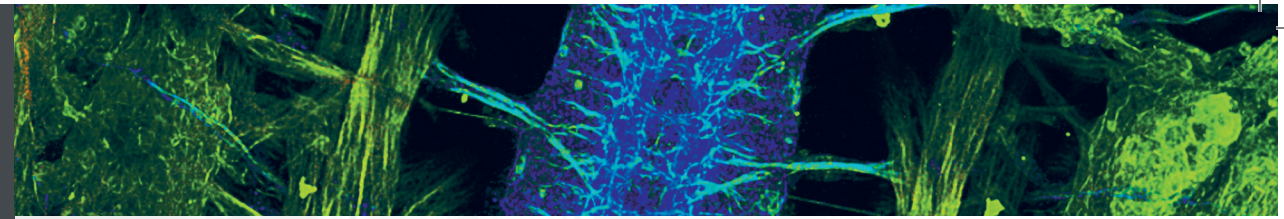
I ILLINOIS

1206 West Gregory Drive
Urbana, Illinois 61801
www.igb.illinois.edu

24.012

CORE FACILITIES

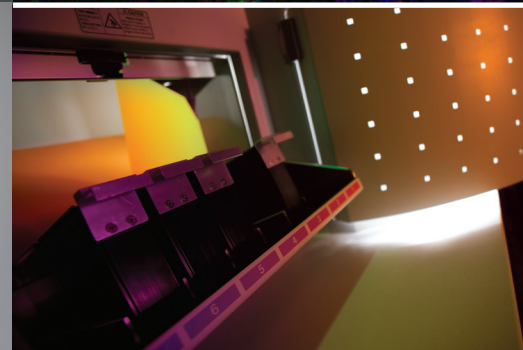
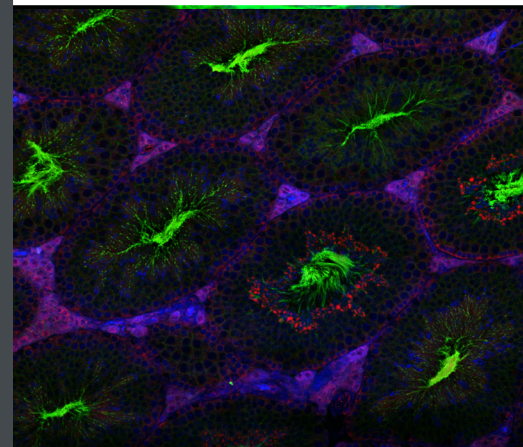
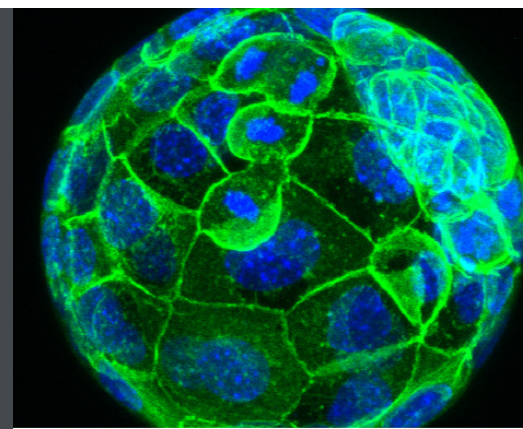
CARL R. WOESE INSTITUTE FOR GENOMIC BIOLOGY



Core Facilities at the IGB is your resource for Light Microscopy, Image Analysis, and Analytical Instrumentation. Our facility provides both step-by-step instruction and in-depth training, allowing researchers to acquire new techniques quickly. With 24/7 access for both IGB researchers and the campus community, IGB Core Facilities can be viewed as an extension of your lab. Our facility is meant to encourage innovation—try new techniques and approaches to achieve your research goals without a significant investment in instrumentation or time. The Core Facilities is a ZEISS Labs@location partner, enabling us to provide both beta instrumentation and advance training to the campus.

WE OFFER:

- ❖ High-end equipment
- ❖ User training
- ❖ Ongoing support, including experiment design and data interpretation
- ❖ Twenty-four hour access



More info at: www.igb.illinois.edu/corefacilities

OPTICAL MICROSCOPY

MINIFLUX: Abberior MINIFLUX

STED Microscope: Abberior STEDYCON

Super Resolution Confocal: Zeiss LSM 900 with Airyscan

Super Resolution Confocal: Zeiss LSM 880 with Airyscan

Multiphoton Confocal: Zeiss LSM 710

Confocal: Zeiss LSM 700

Confocal Raman: WITec Alpha 300

Structured Illumination Microscope: Zeiss Elyra S1

Light Sheet Microscope: Zeiss Lightsheet Z1

Light Sheet Microscope: Ultramicroscope

Slide Scanner: Hamamatsu Nanozoomer

Slide Scanner: Zeiss Axio Scan Z1 with fluorescence

Dissecting Microscope: Zeiss AxioZoom V16

ELECTRON MICROSCOPY

Serial Block Face SEM: Zeiss Sigma VP 3View

ATOMIC FORCE MICROSCOPE

AFM: Asylum Cypher

SAMPLE PROCESSING

Cryostat: Leica CM3050

Embedding Station: Leica EG1150 C and EG1150 H

Microtome: Leica RM2255

Clearing: X-CLARITY

ANALYTICAL

Gel Imager: Image Quant 800

SOFTWARE

3D Reconstruction: Imaris, Analyze 3D, Amira-Avizo

Deconvolution: AutoQuant, Zen Desk

2D Image Analysis: Axiovision, Zen Desk

3D PRINTING

3D Printer: Formlabs Form 2

NMR

NMR: Agilent 600MHz

XRay CT scanning

Xray CT: NSI X5000